

MOOG
VIDEOLARM



DeputyDome™

Bullet-Resistant Dome Camera System

Moog Videolarm's patented DeputyDome adds an unparalleled level of protection to your video security system. Exceeding UL Standard 752 – Level 1 protection, the DeputyDome is constructed of heavy-gauge stainless steel and incorporates a unique "turret" system, which enables the dome to absorb the shock of attacking bullets (up to 9mm). This cushioning effect protects the camera from hostile vibrations. Ideal for volatile, high-crime areas, the DeputyDome comes preassembled with either an IP or analog day/night 26x zoom camera. Also available is a pressurized model which protects the camera system from minute foreign substances.

Key Features

- Meets/exceeds Level 1 protection per UL Standard 752
- Heavy-duty stainless steel housing construction and mounting bracket
- Unique rotating "turret" transfers ballistic impact to outer steel housing
- Lexguard™ shield protects camera from bullet attacks up to 9mm
- Pressurized models available: eliminating moisture, dust, insects and exhaust fumes
- Available IP or analog PTZ models (day/night camera with integral 26x zoom)
- Quick disconnect feature provides simple, fast installations & easy servicing
- Tamper-resistant fasteners
- Heater/blower feature

US Patent #6,354,749 B1



The patented bullet-resistant DeputyDome™ is available in either a standard or pressurized model. The day/night color camera features an integral zoom lens. An integral pan/tilt with 360° continuous rotation is also included. Each DeputyDome comes with a quick-connect wall mount.

IP Ready (Network):

DDW10CN2

DeputyDome, bullet-resistant IP camera system, PTZ and 26x day/night camera system. Heavy-duty metal gear pan/tilt. MPEG-4 & MJPEG video compression. Full DI. Clear dome, with 24Vac input, heater/blower

Pressurized:

The PDDW10CN2 is a pressurized version of network model DDW10CN2. Pressurization eliminates dust, insects, and pollution; dry nitrogen eliminates fogging and condensation build-up. PDDW10CR2 unit is a pressurized version of analog model DDW10CR2. Pressurization eliminates dust, insects, and pollution; dry nitrogen eliminates fogging. The PDDW10CR unit is a pressurized analog DDW10CR2, with 120Vac heater

Analog:

DDW10CR2 is the DeputyDome, 10-gauge steel bullet-resistant outdoor dome PTZ camera system with 26x day/night camera, on-board receiver/driver, 24Vac heater. The DDW10CR is the analog model of the DDW10CR2, with 120Vac heater

ACCESSORIES:



PS24

Rugged cast aluminum power box with 84vA and 24vA power supply



PM3

Pole mount bracket for existing 3' - 10' poles 150 Lbs. max

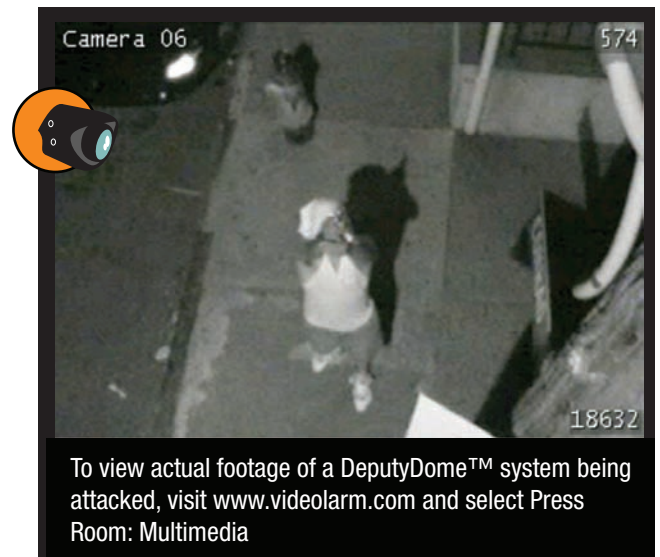


SRCW2000

Rotating roof-top bracket, 150 Lbs. max

For full product specs, go to videolarm.com and use the search engine to navigate to a specific product page

DeputyDome Under Fire:



To view actual footage of a DeputyDome™ system being attacked, visit www.videolarm.com and select Press Room: Multimedia

SPECIFICATIONS:

Mechanical Specifications

Size: (h*w*d)	16.5 x 14.5 x 12.75"	(420 x 368 x 324mm)
Weight:	65 Lbs. (30 Kg.)	
Construction TOP:	Stainless steel	
Dome:	Cell-cast acrylic	
Rotating Liner:	Heat treated aluminum	
Wall Mount Bracket:	10-gauge powder-coated stainless steel	

Pressurized Models:

Pressure Relief Valve:	7 psi
Schraeder Valve:	Nitrogen input
Power Connector:	18 pin hermetically sealed

Network Specifications

Network Interface:	10/100 Base-T Ethernet	
Protocols:	TCP(UDP)/IP, ICMP, HTTP, TFTP, FTP, Telnet, SMTP, DHCP, NTP, DNS, DDNS, RTSP, RTP/TCP(UDP)	
Video:	MPEG-4; JPEG; MJPEG	
Video Adjustment:	Brightness, Contrast, Hue, Saturation, Frame rate, Bit rate (Constant Bit Rate (CBR), Variable Bit Rate (VBR) with quality level(s), Group of Pictures (GOP) size, Frame Sequence (I-Frame, I-Frame/P-Frame), Interlaced/ Progressive Scanning	
Resolutions Full	D1(4SIF):	NTSC=720x480; PAL=720x576
	SIF:	NTSC=352x240; PAL=352x288
	QSIF:	NTSC=176x 112; PAL=176x144

Camera Specifications

Image Sensor:	¼ type EXView HAD™ CCD
Signal Format:	NTSC, PAL
Number of Effective Pixels:	Approx. 380,000 pixels
Horizontal Resolution:	470 TVL - NTSC • 460 TVL - PAL
Lens:	26x Zoom f=3.5mm (wide) to 91.0mm (tele)
Digital Zoom:	12X (216X with optical zoom)
Angle of View:	55° (wide end) to 2.3° (tele end)
Sync. System:	Internal/External (V lock)
Minimum Illumination:	1.0 lux (typical, color) (F1.4 normal shutter speed)
With Cut Filter Removed:	Near infrared, .02 lux IR
S/N Ratio:	50 dB
White Balance/Gain/Iris:	Auto with manual override
Back-Light Compensation:	On/Off

Electrical Specifications

Power Source	120Vac:	115Vac, 65W
	24Vac:	24Vac (Class 2), 65W
Video Output:	24Vac (Class 2), 65W	

Environmental Specifications

Temperature Range:	-20°F (-29°C) to 120°F (49°C)
--------------------	-------------------------------