



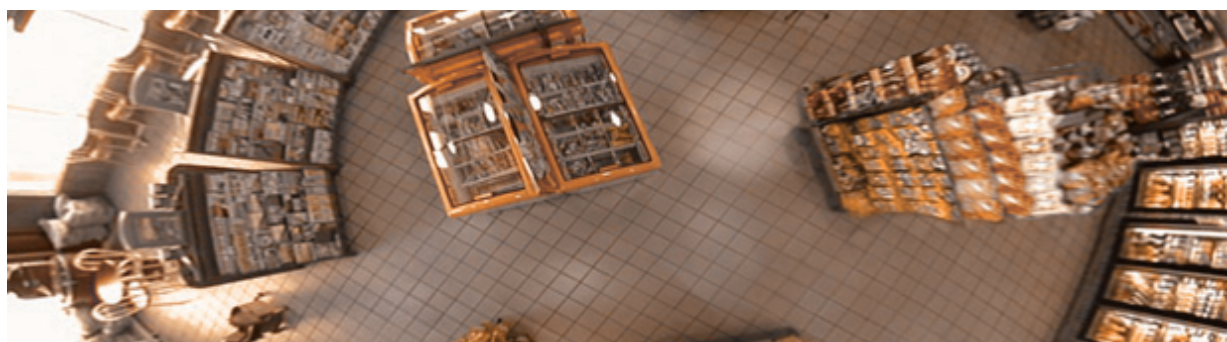
## IRM360-IV

### Embedded Ceiling Mount 360° Panomorph Lens/Camera Enclosure

Moog Videolarm's IRM360-IV provides an easy to install, aesthetically designed, and completely self-contained enclosure for 360° panomorph lens compatible box cameras. This plenum-rated enclosure is ideal for office, retail, and school environments.

#### Key Features

- Includes a flush decorative trim ring with safety lanyard and captive security fasteners
- Comes with right angle RJ45 connection jumper cable for easy camera plug-in
- Vandal-resistant aluminum top
- Easy installation and servicing from below the ceiling or overhang
- Compatible with most major ImmerVision *Enables*® panomorph lens qualified box cameras
- Designed to resist water and dust



# IRM360-IV-IV

## Indoor Fixed Housing

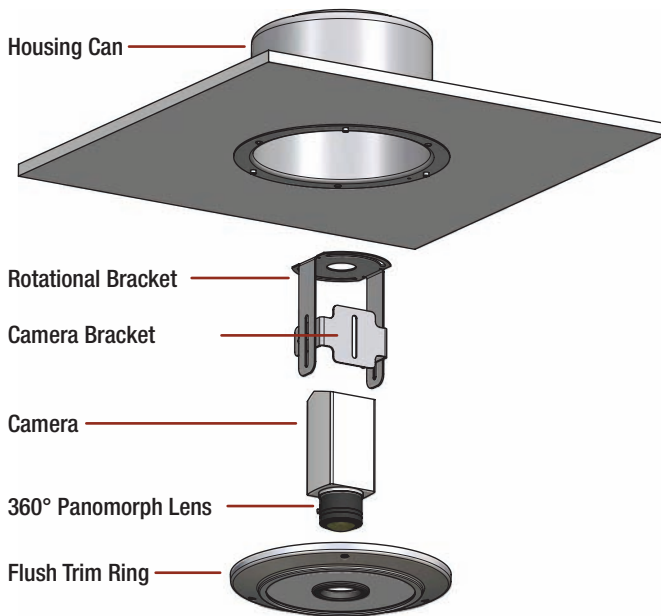
### IRM360-IV

The IRM360-IV indoor ceiling-mount housing features a flush plate that accommodates an ImmerVision *Enables* panomorph lens and qualified box camera. The upper body, made of heavy 10-gauge aluminum and a white powder cast trim ring, is plenum rated for fire resistant ceiling applications

## Easy Installation & Servicing From Below Ceiling

Ideal for drop ceiling / overhang applications, the IRM360-IV flush enclosure provides more than a monitoring solution. It is engineered to reduce costly service fees with its unique and user-friendly design that allows servicing the camera from below the ceiling

## Inside the Unit



## COMPATIBLE CAMERAS:

To view the latest listing of compatible cameras please visit [www.videolarm.com/thirdparty.jsp](http://www.videolarm.com/thirdparty.jsp)

### FIXED

<b>ACTI</b>	ACM-5601	<b>Panasonic</b>	SDIII WV-CP480/484, WV-SP 306, WV-NP 502
<b>AXIS</b>	2420	<b>SAMSUNG</b>	SNB-3000N, SNB5000
<b>BASLER</b>	BIP 640c-dn/1000c-dn/1300c-dn BIP2 1300c-dn	<b>SANYO</b>	VCC-HD2100P, VCC-HD2300P, VCC-HD2500P
<b>BOSCH</b>	Dinion XF LTC0485/NWC 0455	<b>STARDOT</b>	NetCam SC 1MP
<b>GANZ</b>	GANZ-YCH-03Am, GANZ-YCH-04	<b>VERINT</b>	Nextiva S2600e
<b>Infinova</b>	V5101-A5004	<b>Watec</b>	WAT-902H ULTIMATE
<b>IQinvision</b>	IQeye511, IQeye711	<b>SONY</b>	SNC-CH140/240

## ImmerVision *Enables* 360° Panomorph Lenses



ImmerVision's patented optic technology combines 360° panomorph lenses and immersive software algorithms to enable 360° functionalities for a variety of indoor and outdoor applications. Moog Videolarm offers a suite of enclosures and mounting accessories to accommodate the growing need for 360° surveillance in any environment

## SPECIFICATIONS:

Mechanical Specifications		
Size:	11.2" x 8.25"	(284 x 210mm)
Weight:	10 Lbs. (without camera/lens)	(4.6 Kg.)
Construction	BACK BOX:	10-gauge aluminum
	TRIM RING:	Die-cast aluminum
	FLUSH LENS PLATE:	1/8" aluminum
Environmental Specifications		
Operating Temperature:	-20°F to 120°F	
Maximum Camera Length (MCL)		
Fixed:	5.7"	(145mm)
Certifications and Ratings		
RoHS		

## Dimensions / Architectural Drawings

