



## Liberty LDW Series

Powered by  VIDEOIQ®

Moog Videolarm's LDW Series camera system provides a complete surveillance solution in one enclosure, including a high resolution PTZ camera, onboard recording, and video analytics. This system leverages the most highly regulated and reliable wireless technology on the market: existing cellular networks. It's the perfect solution for difficult-to-wire, rapid deployment or isolated applications. The Liberty LDW Series camera system reduces installation cost, allowing you to experience the freedom of wireless within a flexible video surveillance network.

### Key Features

- Multiple camera types (Dome and PTZ)
- Edge recording
- Built in analytics
- High resolution video
- The unit can be installed in minutes
- One power input (120/240Vac) for the entire system
- IP reset eliminates the need to service the camera due to network outage
- Embedded Wifi and 3G/4G, no USB module needed



# LIBERTY SERIES SYSTEMS

## CHANGING THE FACE OF VIDEO SURVEILLANCE:

Choose Your Camera:

High Definition Fixed Camera



Rugged S-VIEW™ PTZ Cameras



Choose Your Enclosure:

SM5C2N with PMSM5



Fixed model cameras **only**

Integrated Unit LDW75CLG



Made to fit both fixed and PTZ model cameras  
12Vdc model available for solar applications

## ONE POWERFUL SOLUTION:

Active Applications:

PHILADELPHIA, PA - CITY-WIDE SURVEILLANCE





TUSCALOOSA, AL - IMAGE FROM SVIEW™, POST 2011 TORNADO DAMAGE



SOLAR DEPLOYMENT



## CAMERA SPECIFICATIONS:

	SView™ (PTZ)	VideolQ Dome
		
<b>CAMERA SPECIFICATIONS</b>		
Image Sensor:	1/4 type Exview HAD CCD, progressive can	CMOS
Pixels:	380,000 (NTSC), 440,000 (PAL)	1920x1080 (1080p)
Lens:	36x optical, F1.6 to F4.5 - f =3.4mm to 122.4mm	3-8mm standard
Digital Zoom:	12x	
Horizontal Resolution:	530 TVL	
Minimum Lumination:	S/B 0.1lux/1/4sec	.25lux
Angle of View:	(H): 57.8 (wide end) to 1.7 (tele end)	34-80°
PTZ Protocol:	Pelco D	
<b>COMPRESSION</b>		
Standard:	H.264 (mid-line)	2 x H.264 (mid-line), 1-mjpg
Frame Rate:	30fps	30fps
Stream:	Dual stream frame rate, activity based	Dual stream frame rate, activity based
Alarm Indicators:	Visual, colored boxes	Visual, colored boxes
Pre Alarm Indicators:	√	√
<b>ENVIRONMENTAL SPECIFICATIONS</b>		
Operating Temperature:	-20°F to 120°F (-29°C to 49°C)	-20°F to 120°F (-29°C to 49°C)
Power:	90 Watts, 50/60Hz	91 Watts, 50/60Hz
Input:	110/220Vac	110/220Vac
Output:	24Vac/12Vdc	24Vac/12Vdc
<b>VIDEO ANALYTICS</b>		
Fence-Line and Perimeter Crossing Detection:	√	√
Area Protection:	√	√
Direction of Travel Alerts:	√	√
Crowd Detection:	√	√
Loitering and Dwell Time Alarms:	√	√
Missing Object Detection:	√	√
Cross Camera Object Search:	√	√
Automatic Alarm Reporting w. Video Clip:	√	√
Automated Calibration:	√	√
<b>ON-BOARD RECORDING</b>		
Internal 1GB Storage:	√	
Internal 2GB Storage:		√
Patented Life Span Technology:	√	√
Hard-Drive Size:	160GB (optional 500GB)	500GB
<b>DIAGNOSTICS</b>		
Loss of Communication Alert:	√	√
Hard Drive Failure Alert:	√	√
Scene-Change Trouble Alert:	√	√
Self-Diagnostics Built-In:	√	√

## CAMERA SPECIFICATIONS CONTINUED:

NETWORK AND COMMUNICATIONS	
Protocols:	HTTP, HTTPS, TCP, RTSP, UDP, RTP, DHCP, NTP, DNS
Zero Configuration Auto IP Discovery:	√
Security:	Multiple user access levels with password protection, IP filtering, and HTTPS encryption
Web Browser Access to Camera:	√
WIRELESS ROUTER	
Network Compatibility:	IEEE 802.3u compliant Cabl and DSL modems with static IP, PPPoE, PPTP, L2TP
Buttons/Switches:	SGNL (signal strength display), reset button, configuration mode/ IP pass-through mode
LED Indicators:	Power, ethernet LAN status, USB modem, express card modem signal strength
VIDEO IQ VIEW SOFTWARE SYSTEM REQUIREMENTS	
CD-ROM with View Software:	√
PC Requirements:	Core-2 Duo 2.0GHz CPU or higher, 2GB RAM, Windows XP, Vista, or Windows 7

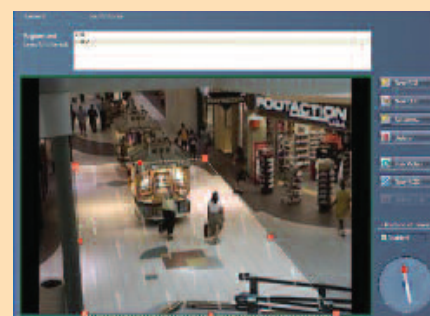
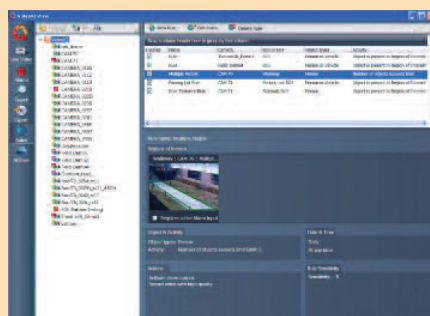
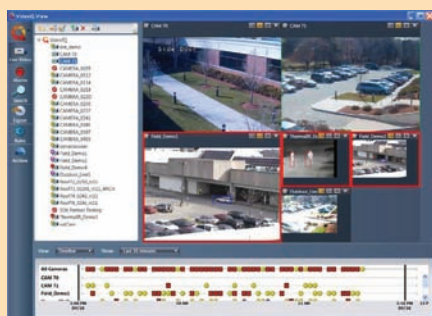
## HOW THE SYSTEM WORKS:

Moog Videolarm and VIDEOIQ have partnered to produce a powerful camera solution; one that:

- Can be installed in minutes
- Utilizes either 3G/4G cellular networks or Wifi connectivity to transmit video
- Can be powered locally using 110V/220V direct input from street lights (power adaptor optional), other readily accessible power sources, or even using a solar wind kit (sold separately)
- Transmits video at optimal efficiency for cellular networks by using video analytics and proprietary bandwidth minimization algorithms
- Stores locally up to 500 GB hard drive space (approx. 60 days of video)
- Comes with its own video management system for a professional, complete business-class solution

## VMS SPECIFICATIONS:

### Video Management System



<p>Event Driven Alarm Notification, Review, and Response:</p> <ul style="list-style-type: none"> <li>• Alarm list with camera name, rule violation, object type, time, etc., plus audible notification</li> <li>• Click on alarm line to view event video clip and live camera stream</li> <li>• VoIP audio to any camera, plus VoIP listen and record option</li> <li>• Email or store alarm clips on demand</li> <li>• Trigger local output at camera or encoder for siren, strobe, or door release</li> </ul>	<p>Browser Access:</p> <ul style="list-style-type: none"> <li>• Using only a browser from any PC, you can access alarm events, live video and audio, view alarm input and output status, communicate via VoIP audiotalk down, and activate remote alarm outputs for door release.</li> </ul>
<p>Live Camera View with VideoIQ IQTrack™ — at up to 1080p/30fps Resolution:</p> <ul style="list-style-type: none"> <li>• Monitor hundreds of cameras simultaneously for health, alarm status, and connectivity</li> <li>• View up to 16 cameras live — each with selectable window size</li> <li>• Automatic zooming and tracking on selected object types for any cameras</li> <li>• Lock in on and track an individual object with the click of a mouse</li> <li>• Activate streaming one camera at a time or in groups</li> <li>• Automatic adjustment of streaming resolution as you change window size</li> <li>• Red outline around camera window alerts operator to an active alarm</li> <li>• Alarm event timeline with adjustable time scale</li> </ul>	<p>Group Management and Camera Configuration:</p> <ul style="list-style-type: none"> <li>• Complete camera and encoder setup via the network</li> <li>• Full image, network, alarm, compression, audio, and storage configuration</li> <li>• Cloning of camera setup for easy deployment in large installations</li> <li>• Complete setup of analytic rules, including rules applicable to multiple cameras, and alarm inputs and outputs</li> <li>• Archive control for all cameras from a single screen</li> <li>• Manage software and firmware upgrades to all cameras and encoders in groups or individually</li> <li>• Save camera configurations</li> </ul>
<p>Click and Search — Intelligent Event Logging, Retrieval and Alerts:</p> <ul style="list-style-type: none"> <li>• Remotely search recorded video on any cameras in your network</li> <li>• Click on any recorded object and automatically retrieve video evidence on similar objects from any or all iCVR cameras and encoders in seconds</li> <li>• Search by time, camera groups, rule violation type, object type, etc.</li> <li>• Selectable search mode finds object matches in all video or alarm video only</li> <li>• Export video and create watermarked evidence archives playable on any PC</li> </ul>	

## ICVR STORAGE DOCUMENT:

For more information about the storage, bandwidth, and recording capabilities for the Liberty Series go to the following web based links:

[http://www.videoiq.com/resources/VideoIQ\\_StorageWP\\_8\\_10.pdf](http://www.videoiq.com/resources/VideoIQ_StorageWP_8_10.pdf)

<http://www.videoiq.com/resources/ICVRBandwidth.pdf>

<http://www.videoiq.com/resources/ICVRRRecording%20Math.pdf>